

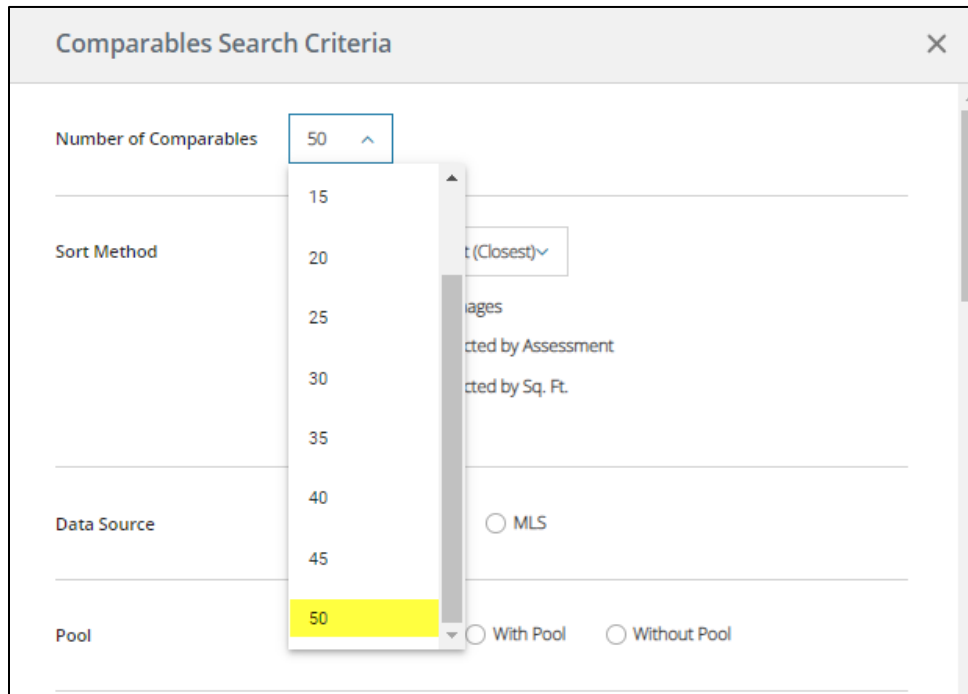
Enhancements

Comparable Selection Page – Increasing to 50 max comp results

On the Comparable Selection page, we previously limited the number of comparable properties to a maximum of 10. This Production release, we are now increasing this number to a maximum of 50 comparable properties shown on the comparable selection page—although there is still a maximum of 20 properties that can be selected [to be included on the comparable report]. The 20 maximum properties on the comparable detail report is a carry-over limit from the prior Realist version.

To update to the maximum 30 neighbors on the Comparable Selection:

- Login to Realist and run a search to access property details and then comparable selection page
- Click on “Search Criteria”
- Under “Number of Criteria” select the drop down and update to 50
- Please note that the number of comparables can be updated in increments of 5
- Alternatively, the number for comparable search can also be set under User Preference → Report → Comparable Report



Benefits

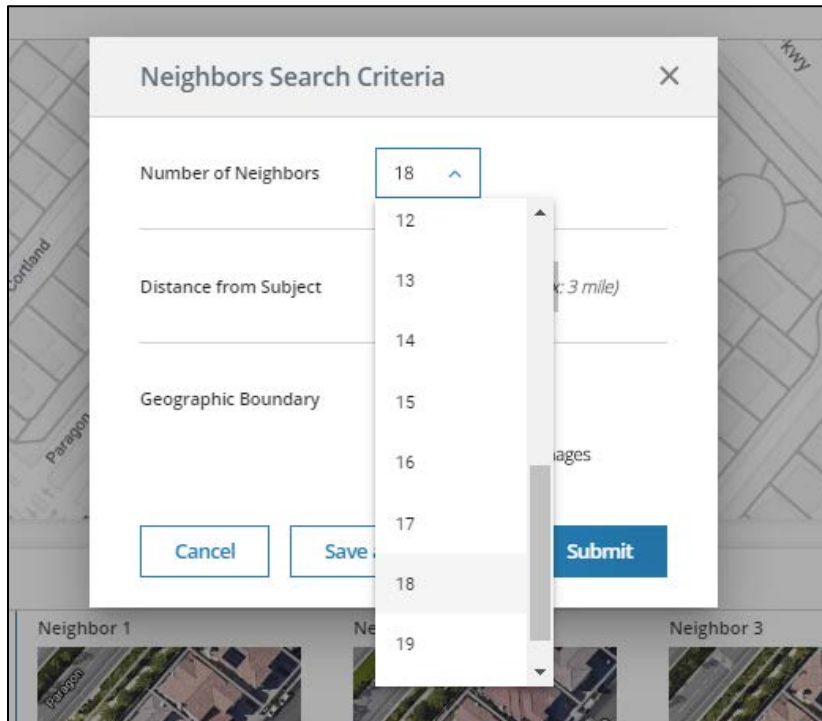
The ability to set the comparable search to return up to 50 properties provides a huge benefit to our Real Estate Agents. When creating a Comparable report that provides thorough details of the Subject Property vs. comparable properties, it is important to be able to maximize the number of available properties in order to compare options such as price, beds, baths, living/building, AVM, tax and assessment, and include only the most “comparable” properties on the final Comparable Detail Report. This is especially important for properties located in densely packed neighborhoods, boroughs, and municipalities.

Neighbors Report – Increasing to 30 max Neighbors

On the Neighbors report page, we previously limited the number of neighbors to be included on a report to a maximum of 10. With this release, we are now increasing this number to a maximum of 30 neighboring properties which can be included on the Neighbors Report.

To update to the maximum 30 neighbors on the Neighbors Report page:

- Login to Realist and run a search to access property details and then Neighbors Report page
- Click on “Search Criteria”
- Under “Number of Criteria” update to 30
- Alternatively, the number of neighbor search can also be set under User Preference → Report → Neighbors report



Benefits

The ability to set the Neighbors Report to return up to 30 properties provides a huge benefit to our Real Estate Agents. When creating a Neighbors report, it is important to be able to generate list of neighboring properties based on criteria such as distance from the subject property and geographic boundary, so that only the most relevant “neighboring properties” are included in the Neighbors report. At any time, the number of the neighbors can be reduced in the search criteria to lower or increase the number as needed.

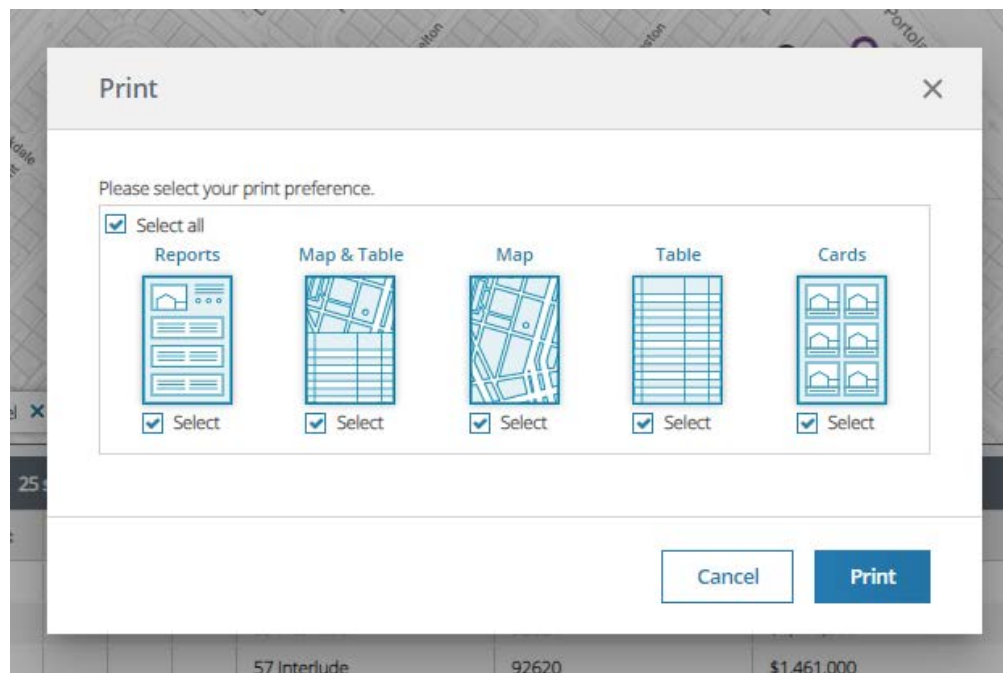
Enhancement to Homepage Print – Print All Functionality

The Realist Homepage (“Dashboard”) features a print functionality that traditionally has allowed our agents to print and effectively download the report in five formats: report, map & table, map, table, and cards.

Previously, our users had to select each report asset individually to initiate a download. With this enhancement, users will now have the option to print all available reports by selecting “Print All” on the Print modal

To use this feature:

- Run a search for properties using Quick Search or My Search
- Once results are filtered accordingly, click on Print
- On Print menu, click on “Select All” to check all available options, or by manually selecting them
- By default the “Reports” option is pre-selected
- Please note: Users are still limited to the number of maximum results for each asset (Report: 25, Map & Table: 100, Table: 100, Cards: 50):
- Additional notes: there may be additional load time required when multiple print options are selected



Benefits

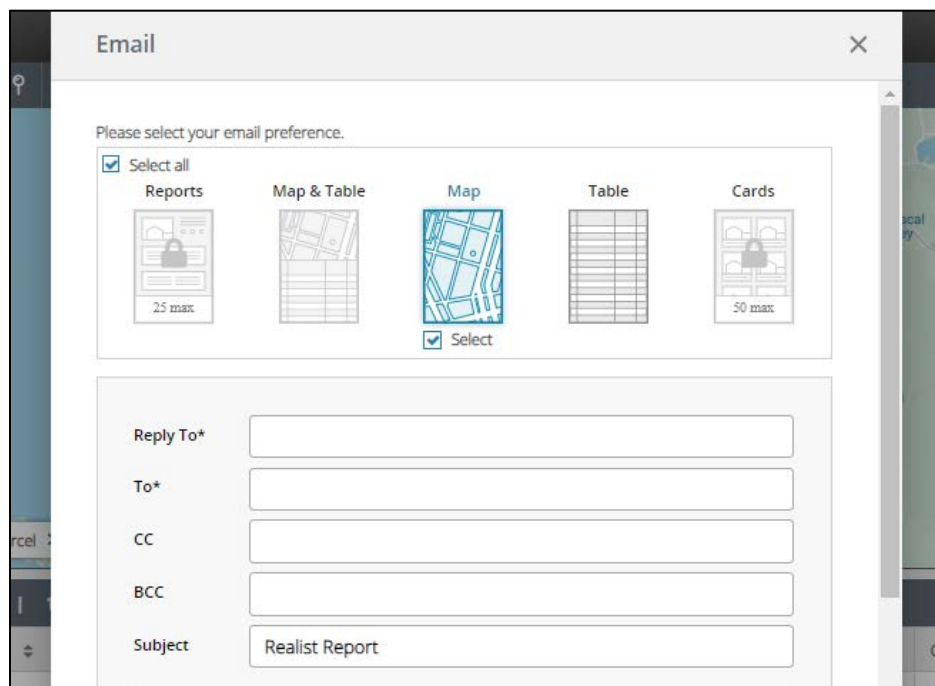
“Select All” option will allow our users the ability to quickly select all the available printable report options and include them in one single PDF file.

Enhancement to Homepage Email – Email All Functionality

The Realist Homepage (“Dashboard”) features an Email functionality that traditionally has allowed our agents to Email and effectively download the report in five formats: report, map & table, map, table, and cards. Previously, our users had to select each report asset individually to initiate a download. With this enhancement, users will now have the option to Email all available reports by selecting “Email All” on the Email modal

To use this feature:

- Run a search for properties using Quick Search or My Search
- Once results are filtered accordingly, click on Email
- On Email menu, click on “Select All” to check all available options, or by manually selecting them
- By default the “Reports” option is pre-selected
- Please note: Users are still limited to the number of maximum results for each asset (Report: 25, Map & Table: 100, Table: 100, Cards: 50):
- Additional notes: there may be additional load time required when multiple options are selected



Benefits

“Select All” option will allow our users the ability to quickly select all the available Emailed report options and include them in one single PDF file.

